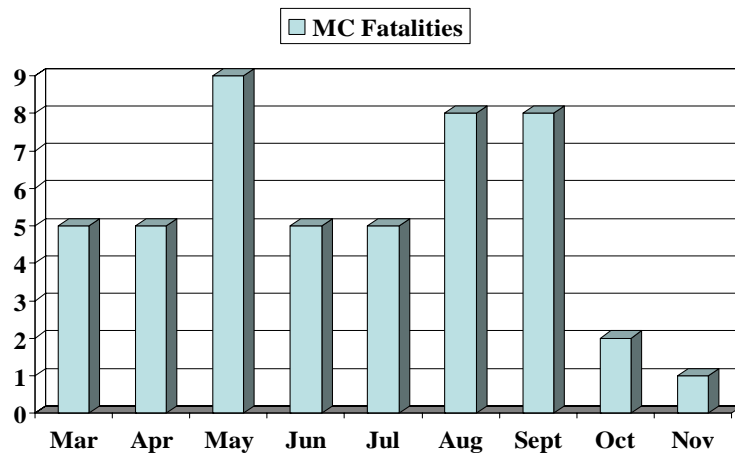


2007
Massachusetts Rider Education
Program
Motorcycle Fatality Report

48 of 55 reports
3rd DRAFT 5/14/08

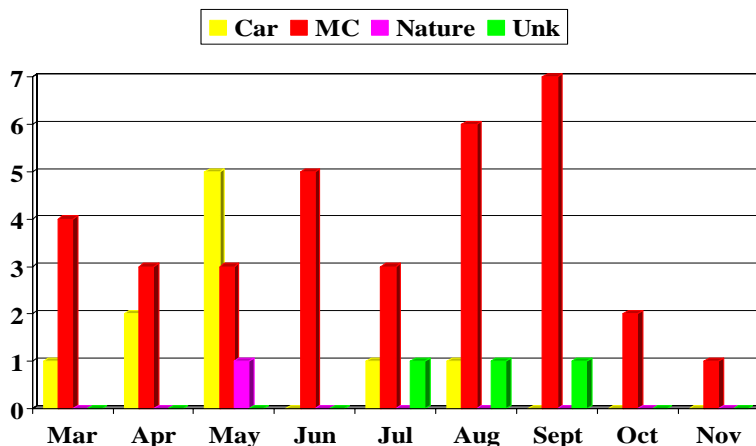
Gene Carabine
MREP Program Coordinator

By Month



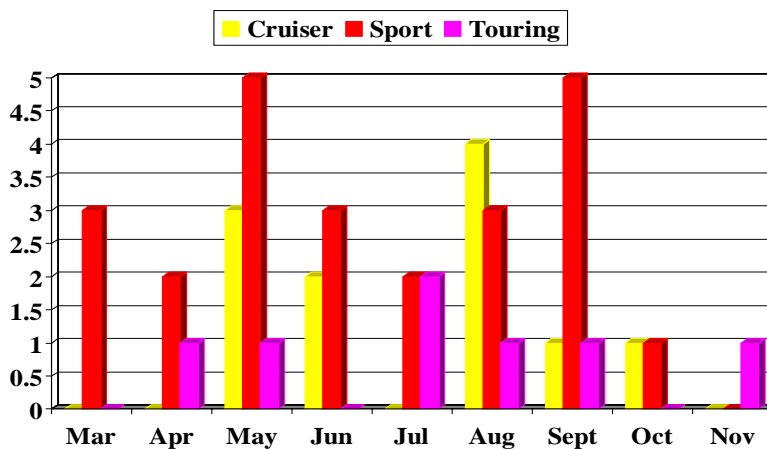
2007 MA Motorcycle Fatality Report

By Month



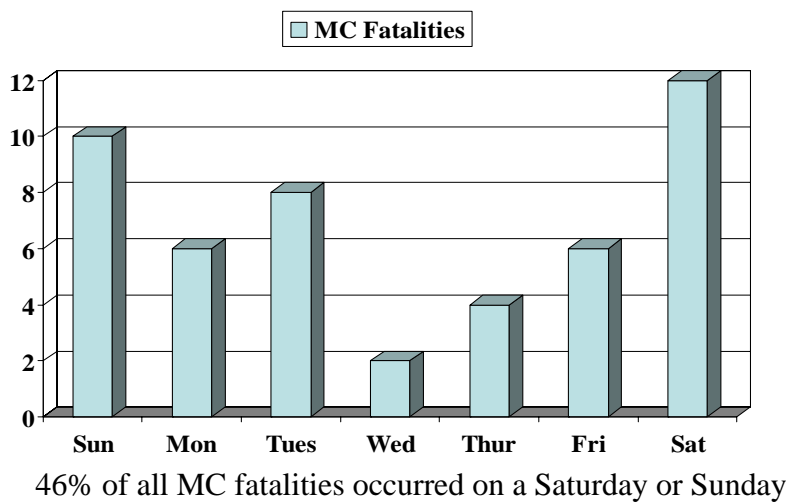
2007 MA Motorcycle Fatality Report

By Month (by MC Type)



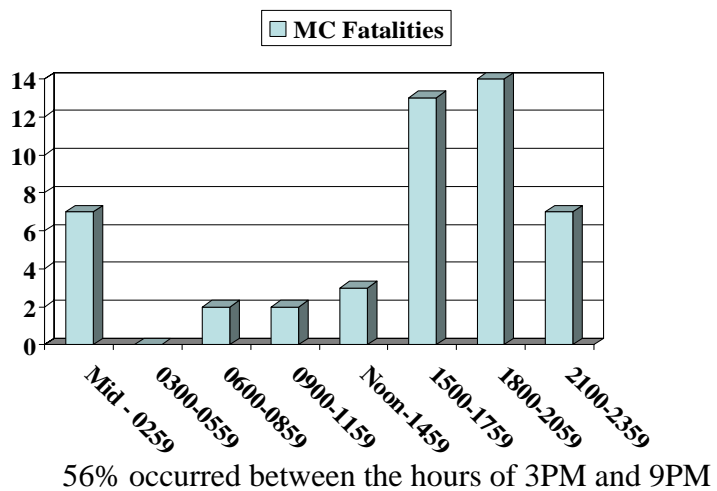
2007 MA Motorcycle Fatality Report

By Day



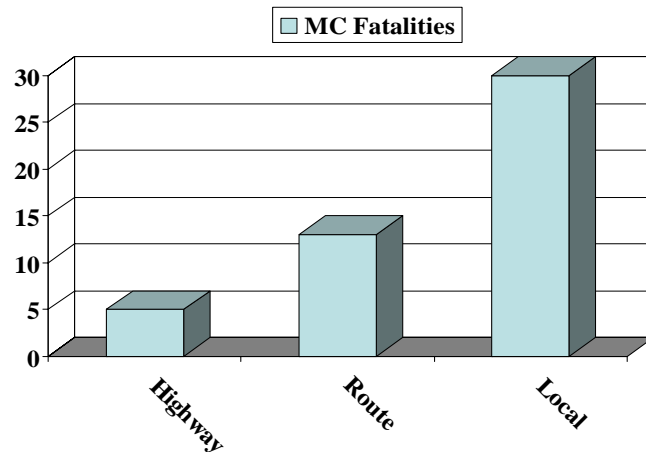
2007 MA Motorcycle Fatality Report

By Time



2007 MA Motorcycle Fatality Report

By Road Type



63% happen on local streets and roads. 2 accidents occurred on I-91

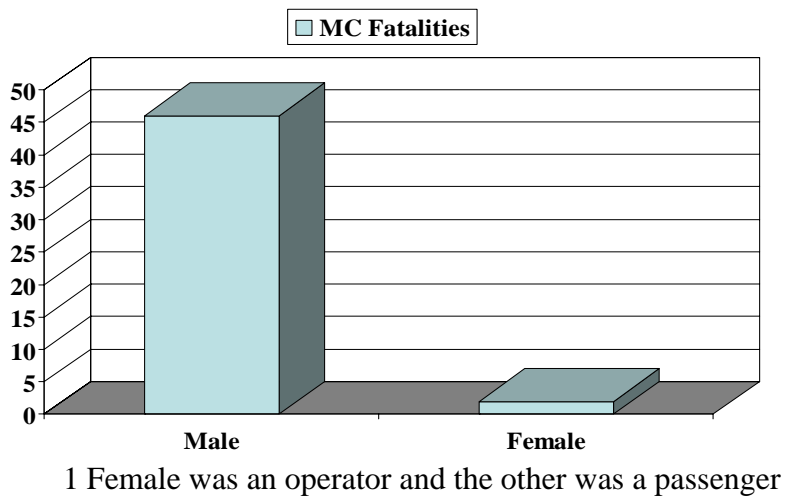
2007 MA Motorcycle Fatality Report

By City

- 30 in cities had 1 motorcycle fatality
- 6 Cities had 2 motorcycle fatalities
 - Chicopee, Fall River, Leicester, Middleboro, Stoughton, and Wareham.
- Boston & Holyoke each had 3 motorcycle fatalities

2007 MA Motorcycle Fatality Report

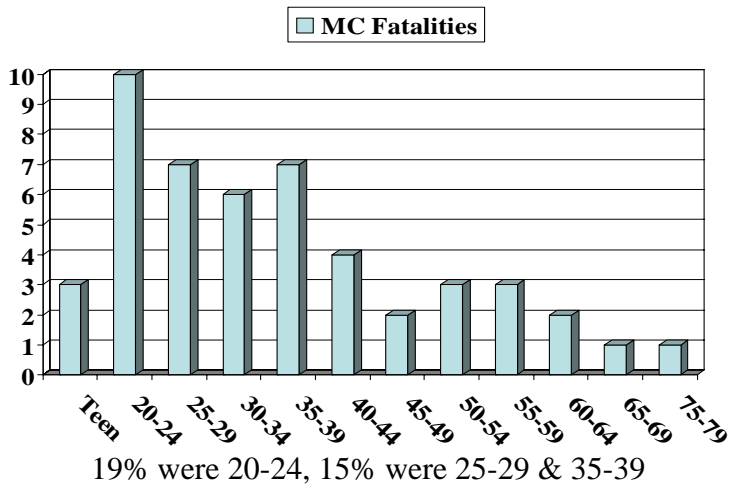
By Gender



2007 MA Motorcycle Fatality Report

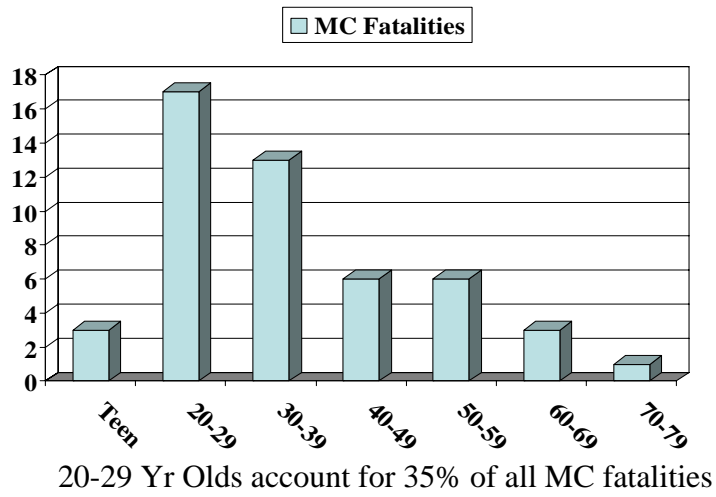
By Age

5 year breakdown



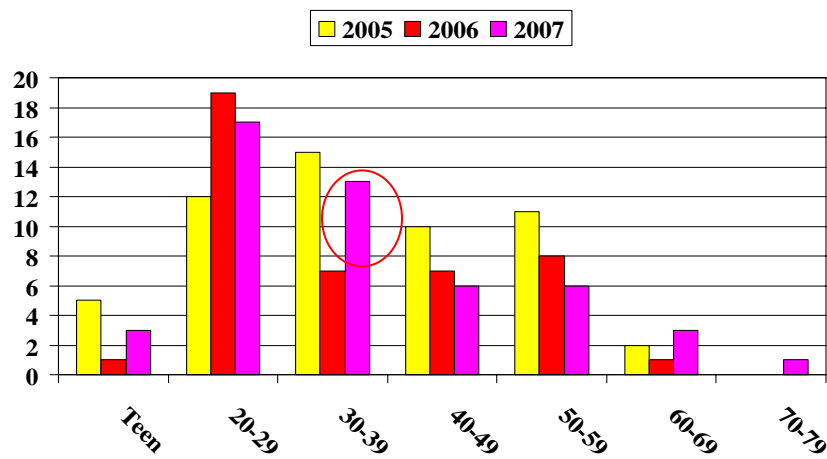
2007 MA Motorcycle Fatality Report

By Age 10 year breakdown



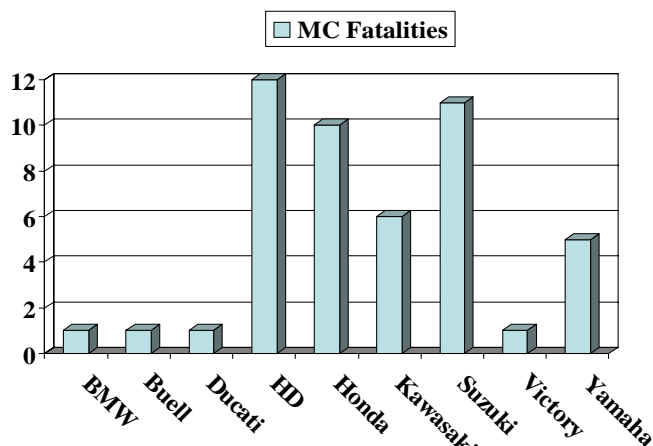
2007 MA Motorcycle Fatality Report

3 Yr Comparison by Age 10 year breakdown



2007 MA Motorcycle Fatality Report

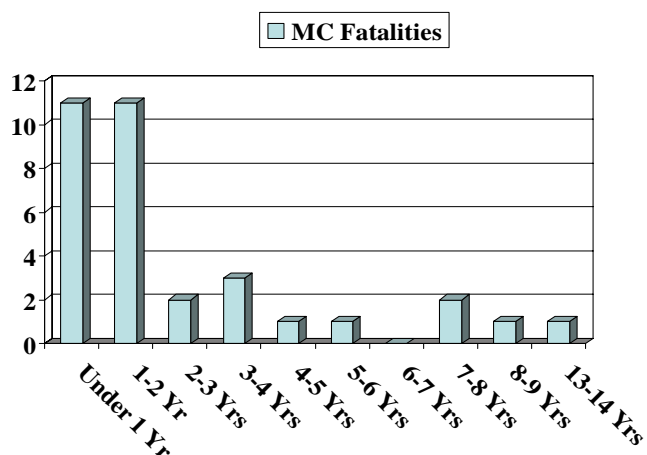
By Make



HD accounted for 25% of all MC fatalities. Suzuki accounted for 23% each.

2007 MA Motorcycle Fatality Report

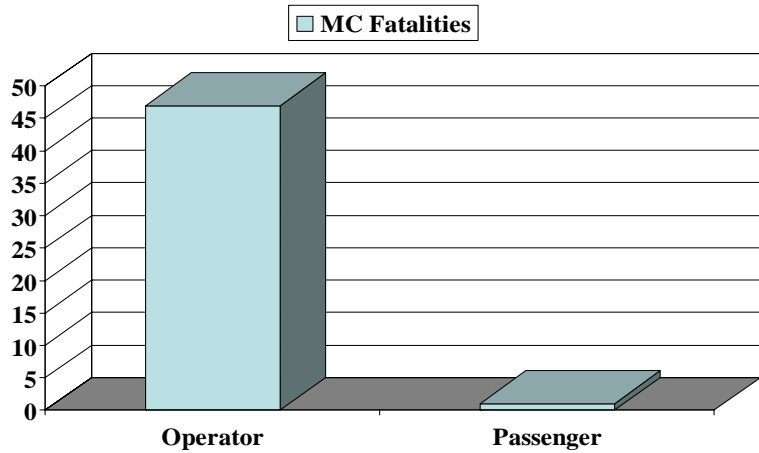
By Time Owned MC



66% owned their bike less than 2 year

2007 MA Motorcycle Fatality Report

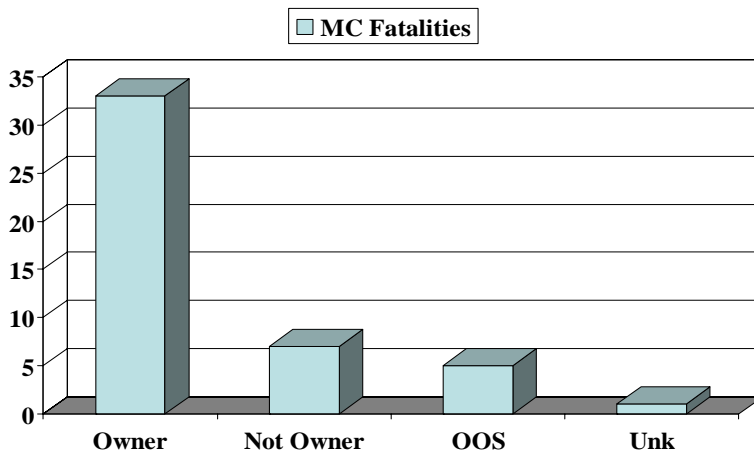
By Operator / Passenger



1 Operators was Female. The 1 Passengers was a Female

2007 MA Motorcycle Fatality Report

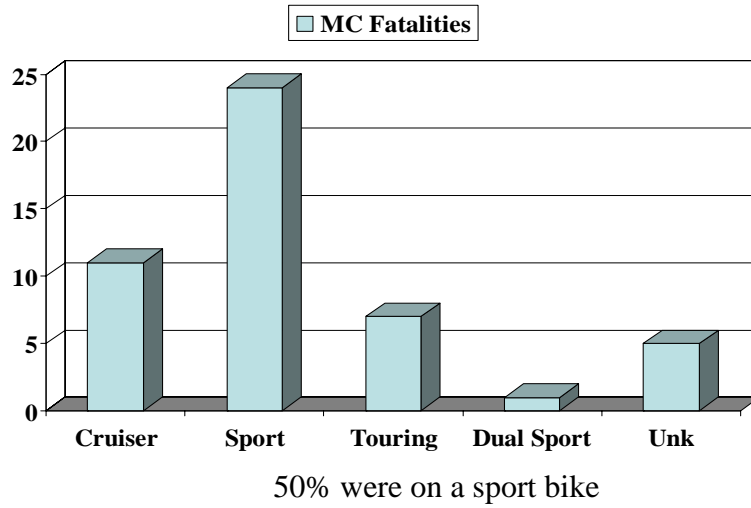
By Ownership



17% didn't own the bike they were killed on

2007 MA Motorcycle Fatality Report

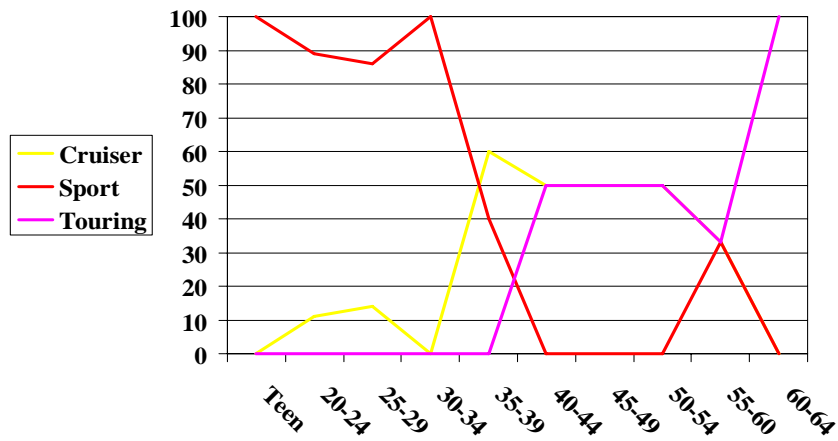
By MC Type



2007 MA Motorcycle Fatality Report

By Age & Make of MC

5 year breakdown



2007 MA Motorcycle Fatality Report

By MC Permits

- 34 of the 48 Fatalities had a MC Permit (71%)
- 6 RMV Records didn't go back that far
- 1 Passenger
- 5 were from Out of State (NH, MD, AL & RI)
- 2 Fatalities had No Permit to operate a motorcycle
- Average time with a Permit – 6.8 Months
- Shortest time with a Permit – 20 Days
- Longest time with a Permit – 22 Months

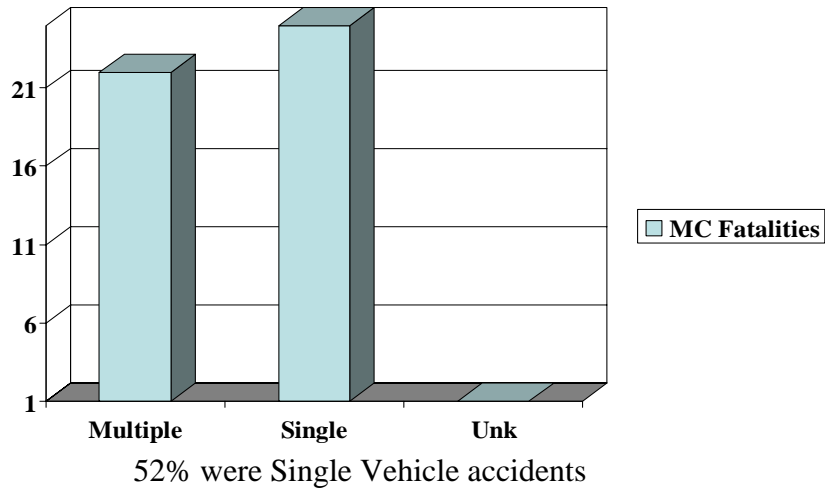
2007 MA Motorcycle Fatality Report

By MC License

- 33 of the 48 Fatalities had a MC License (62%)
- 7 had no license BUT did have a permit
- 1 Passenger
- 5 were from Out of State (NH, MD, AL & RI)
- 2 Fatalities had No license to operate a motorcycle
- Average time with a License – 7.6 Years
- Shortest time with a License – 12 Days
- Longest time with a License – 20 Years

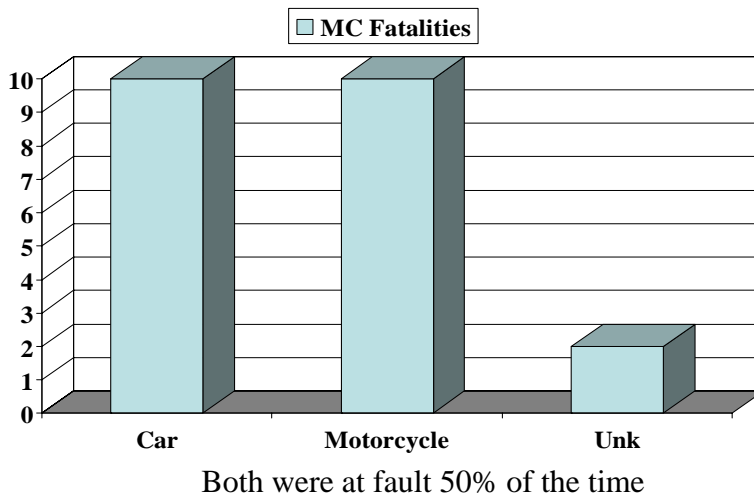
2007 MA Motorcycle Fatality Report

By Type of Accident



2007 MA Motorcycle Fatality Report

Multiple Vehicle Accidents by Fault (21)

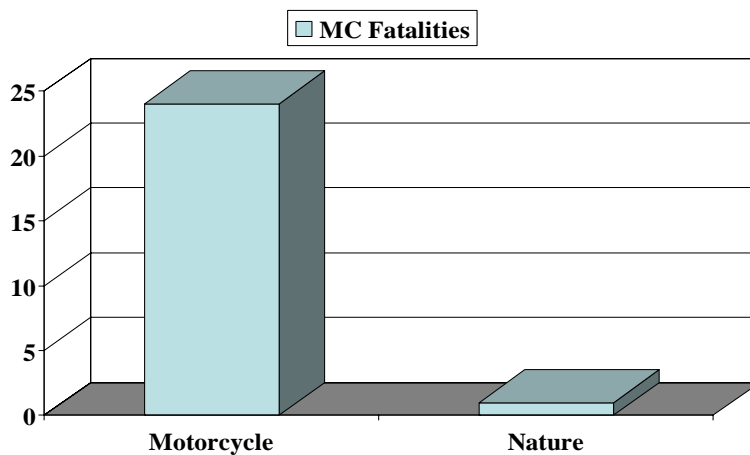


2007 MA Motorcycle Fatality Report

Multiple Vehicle Accidents by Fault (22)

- When the DRIVER was at fault (10),
 - the CAR was TURNING LEFT 70% of the time.
 - The car was given a citation 100% of the time.
 - 90% of the time the fatality occurred at an intersection or driveway.
- When the RIDER was at fault (10),
 - 70% of the time the MOTORCYCLE was SPEEDING.
 - 50% of the time the fatality occurred at an intersection or driveway
- 2 were Unknown

Single Vehicle Accidents by Fault (25)



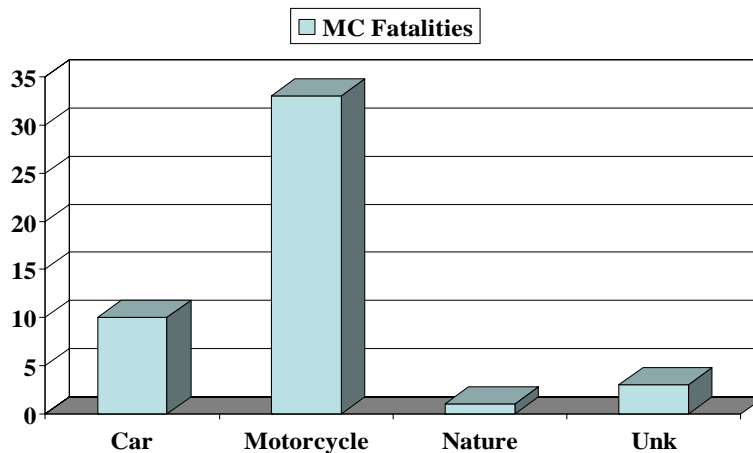
96% of the time the Rider was at Fault

2007 MA Motorcycle Fatality Report

Single Vehicle Accidents by Fault (25)

- 57% of the time Speeding was a major factor (13).
- 35% of the time the MC failed to negotiate a curve (8).
- 70% of the time the accident occurred in a curve.
- 1 was Nature (Falling Tree)

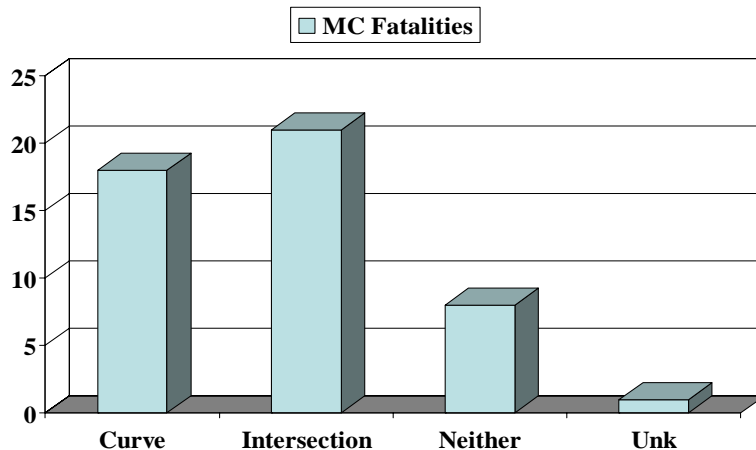
Total Motorcycle Accidents by Fault (44)



71% of the time the Rider was at Fault

2007 MA Motorcycle Fatality Report

Fatalities in a Curves / Intersection



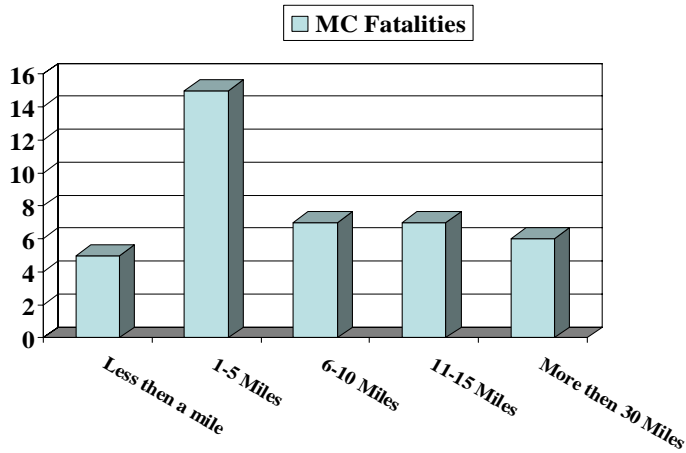
38% of the time the accident occurred in a curve & 44% occurred at an intersection

2007 MA Motorcycle Fatality Report

Fatalities in a Curves / Intersection Cont

- Motorcycle was at fault 94% of the time in a Curve (18)
- At the Intersection (21)
 - The Car and the MC were both almost 50% responsible at an intersection or drive way.
- When there was no curve or intersection (7) involved the Motorcycle was at fault 88% of the time

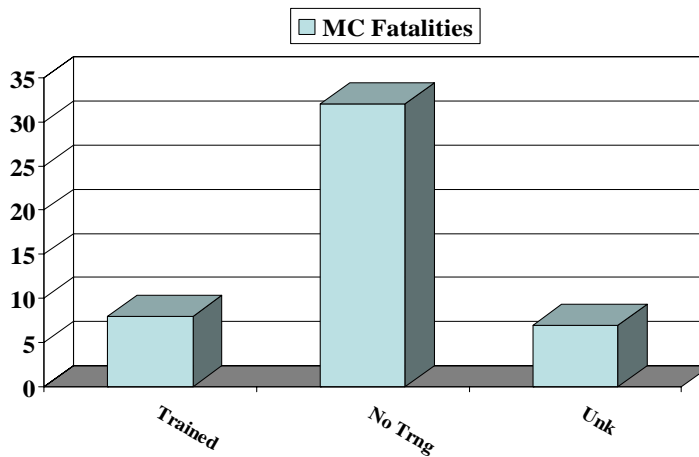
Miles from Home



50% of all MC fatalities occurred less than 5 miles from their home

2007 MA Motorcycle Fatality Report

Training



At least 68% had no training (17% did have trng)

2007 MA Motorcycle Fatality Report

COMMONWEALTH OF MASSACHUSETTS
 Registry of Motor Vehicles
 Statistician's Office
 Quincy, Massachusetts

October 5, 2007

Massachusetts Motorcycle Fatalities
 2003-2007 *(reported to date)
 Months Fatalities Occurred

	2003	2004	2005	2006	2007	Total
January	0	0	0	0	0	0
February	0	0	0	0	0	0
March	2	2	2	2	5	13
April	3	5	9	3	5	25
May	4	6	6	2	5	23
June	3	11	11	5	6	36
July	7	9	6	10	4	36
August	4	18	7	10	7	46
September	6	3	11	9	4	33
October	2	3	0	5	0	10
November	4	3	2	2		11
December	0	0	0	1		1
TOTALS	35	60	54	49	36	234

**Please note 2007 numbers are subject to change.